

Design By Dentists™

Innovative product development for and by dentists

Our products are developed, tested and evaluated by our elected team of highly-qualified and renowned Swedish and international dentists with the aim of making life easier for the dentist during the daily clinical work.







Dental Fenders, Innovations for safe preparations and predictable restorations

In 2006 FenderWedge® was the first of five Fender Products created by Directa's group of dental consultants. Directa is committed to developing aids for improving dentistry.

FenderWedge® shields adjacent teeth during preparation. 70% of unshielded teeth are damaged during preparation*, hence FenderWedge is strongly recommended by eminent lecturers the world over. FenderWedge - the dental "safety belt".

FenderWedge paved the way for FenderMate®, a one-piece matrix wedge that allows a quick and efficient restoration with natural contact and sealed cervical margin. Retention rings or matrix holders are not needed.

FenderMate was designed for small and medium-sized cavities.

However thanks to the introduction of FenderMate Fix it is now indicated for wider cavities.

Our next product FenderPrep® was introduced in 2011 to shield larger preparations such as crowns, veneers and inlays.

With children in mind, FenderPrime® is the first and only combined shield and matrix development. It is specially designed to offer a gentle, comfortable, quick technique for preparing and restoring primary teeth.

FENDERPRIME[®]
Design by Dentists[™]



Fast & safe restorative dentistry

with children in mind.

FENDERPRIME®
Design by Dentists™



1. Insert FenderPrime lingually or buccally.



2. Prepare the cavity whilst protecting adjacent tooth and gingiva.



3. Bend the matrix to the contour of the tooth and restore.*



4. Safety tip: FenderPrime can be secured with a waxed floss.

Quick & Easy Matrix for Primary Teeth

A unique combination of a preparation shield and matrix for Class II fillings of primary teeth where quick and simple solutions are highly valued.

FenderPrime is an interproximal plastic wedge with an inbuilt steel plate. The “boat-shaped” tip allows the gingiva to be compressed without damage and reduces the risk for bleeding. FenderPrime Green (long) can be shaped to the contour of the tooth.

*FenderPrime is available in two sizes, long and short. FenderPrime green (the long wedge) is bendable. FenderPrime yellow has a shorter, more rigid plate for very tight interproximal spaces.

Long



Short



Food approved plastic (Polypropylene) and colour. Stainless Steel. t= 0,08 mm (yellow) and 0,10 mm (green). FenderPrime is a registered trademark owned by Directa AB. Registered Design and Patent pending.

FENDERPREP®

Design by Dentists™



**Confident crown and facing preparations
without damage to adjacent teeth and papilla.**

FENDERPREP®
Design by Dentists™



1. Insert FenderPrep lingually or buccally.



2. Confidently prepare in the knowledge that the adjacent tooth and gingiva are safely protected.



3. FenderPrep can be used in all proximal spaces.



4. The steel plate is perforated allowing it to be bent before insertion providing better space and vision.

**Protects tooth and papilla
during preparations of crowns and veneers**

FenderPrep is a plastic wedge with an inbuilt steel plate specially designed for larger preparations such as crowns, veneers and inlays. FenderPrep improves the quality of preparations and saves time thanks to increased vision and safety.

FenderPrep has a thin, "boat-shaped" tip which enables it to be inserted into tight proximal spaces at the same time as it compresses the gingiva without damage, avoiding bleeding and delay of impression taking.

The steel plate is perforated thus allowing it to be bent before insertion to lean against the adjacent tooth, providing better access and vision.

Regular



Food approved plastic (Polypropylene) and colour. Stainless Steel. t= 0,08 mm
FenderPrep is a registered trademark owned by Directa AB. Registered Design and Patent pending.

FENDERWEDGE®

Design by Dentists™

FENDERWEDGE®

THE DENTAL
ADVISOR

++++

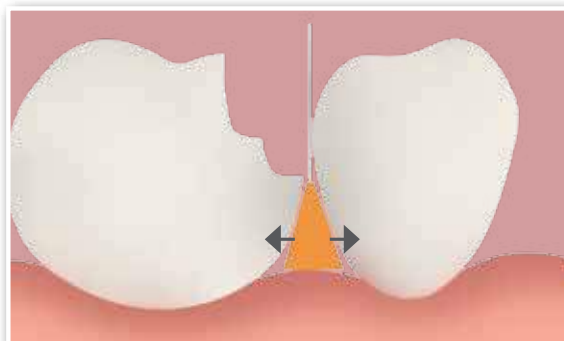


Prepare precise cavities quicker and safely without damage to adjacent tissue.

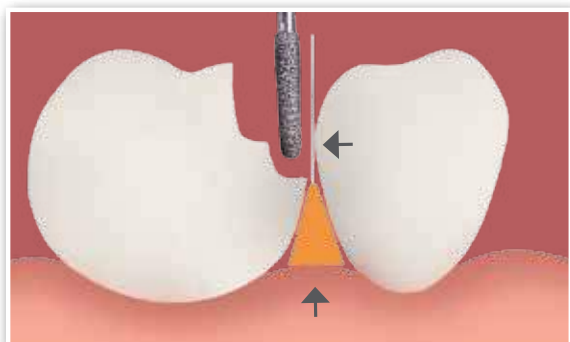
FENDERWEDGE®
Design by Dentists™



1. Inserts buccally or lingually and stays in place during preparation.



2. Provides optimal and lasting separation for insertion of a matrix.



3. Protects adjacent tooth and papilla.



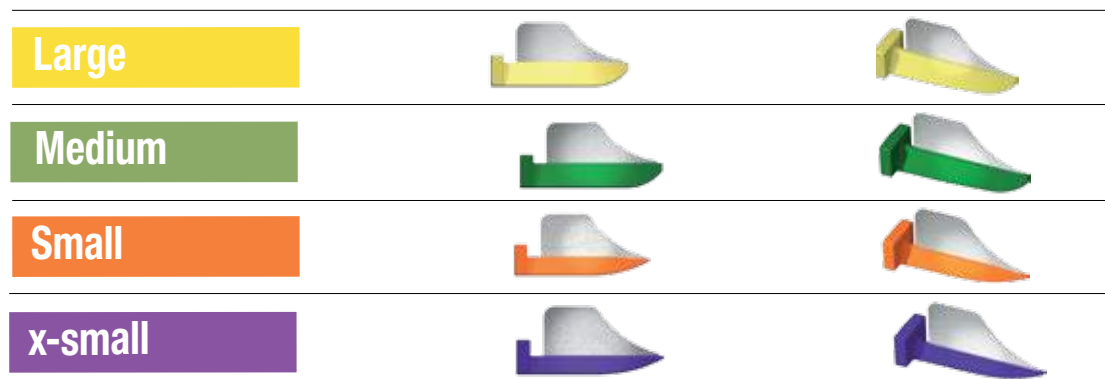
4. After use FenderWedge clearly shows traces of bur contact.

Protects tooth and gingiva during class II preparations

Bur damage to adjacent teeth is a common problem in everyday dental practice. Research shows that 70% of adjacent teeth suffer damage during class II preparations.*

FenderWedge prevents damage to the adjacent tooth and gingiva that commonly occurs during Class II preparations. FenderWedge is a combination of a steel plate and a plastic wedge. It facilitates easy application of a matrix. To avoid aspiration it is recommended to secure FenderWedge with a waxed dental floss.

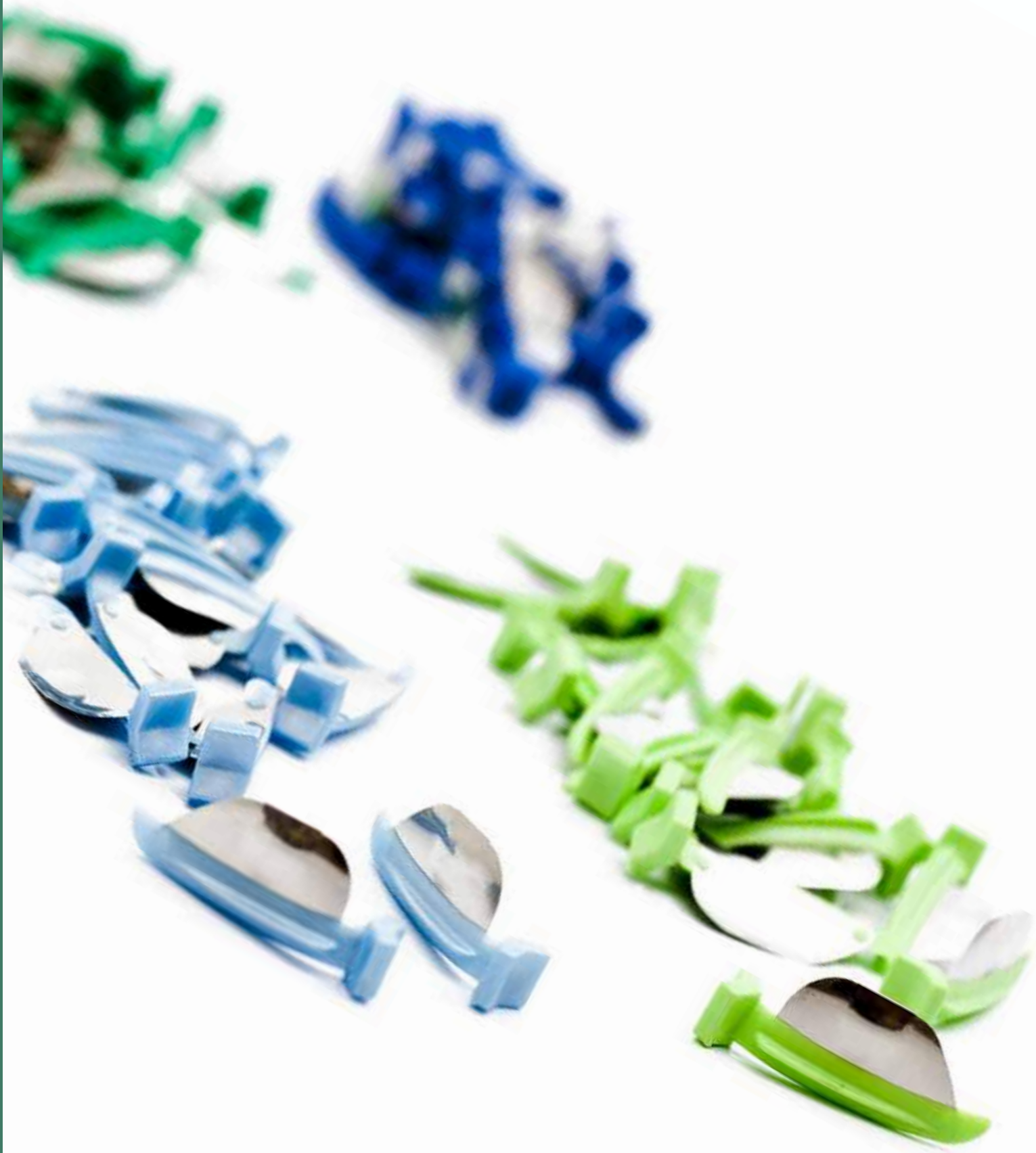
* Qvist V, Johannessen L, Bruun M (J Dent Res 1992 Jul; 71 (7): 1370-3) Lussi A, Gygax M. (J Dent. 1998 Jul-Aug; 26 (5-6):435-41), Medeiros VA, Seddon RP (J Dent. 20000 Feb; 28 (2): 103-10)



Food approved plastic (Polypropene) and colour, Stainless Steel, t= 0,08 mm
FenderMate is a registered trademark owned by Directa AB. Registered Design and Patent pending.

FENDERMATE®

Design by Dentists™



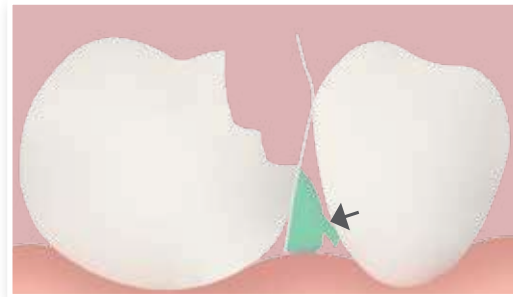
The fastest sectional matrix?

Tight cervical seal & contact in seconds!

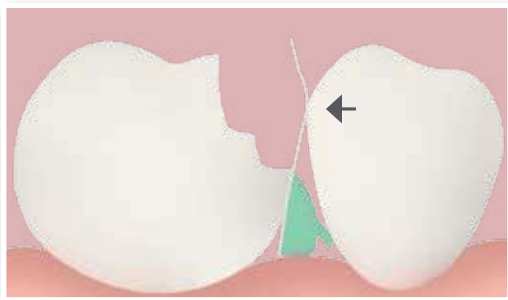
FENDERMATE®
Design by Dentists™



1. Insert the wedge under the preparation with a downward and curved movement.



2. Flexible wing exerts pressure for optimal separation and cervical seal, avoiding overhang.



3. The pre-contoured FenderMate adjusts to the space and forms the optimal contact point.



4. Ready in seconds for a perfect restoration.

Sectional matrix for Class II composite restorations

FenderMate is a pre-curved, one-piece sectional matrix and wedge that provides for quick, safe and predictable composite restorations, with a tight contact and cervical sealing.

FenderMate is designed to be inserted either buccally or lingually. The matrix reaches from the base of the wedge to just a few millimeters above the occlusal surface. The side of the wedge facing the adjacent tooth has an angled wing. During insertion, the wing presses the matrix firmly against the preparation, giving a tight seal at the cervical margin. To form the contact point the matrix has a pre-contoured indentation, which mimics natural contours.

Left Regular



Left Narrow



Right Regular



Right Narrow



Food approved plastic (Polypropylene) and colour. Stainless Steel. t= 0,05 mm
FenderMate is a registered trademark owned by Directa AB. Registered Design and Patent pending.

For very wide cavities FenderMate Fix laterally supports FenderMate

FENDERMATE® Fix

Design by Dentists™



Light Cure Matrix Fixation for wider cavities

The combination of FenderMate and FenderMate Fix gives excellent results with wider cavities. Now, FenderMate is the choice for most situations!



1. Wide box after preparation.



2. Insert FenderMate as normal.



3. Separate the metal matrix band from the wedge with a flat plastic.



4. Syringe FenderMate Fix into the space between the wedge and the matrix.



5. Light cure to seal and shape.



6. Restore. Requires minimal finishing.

N E W

New Complete Restoration Kit

For faster and safer restorations try the New Complete Restoration Kit, now including:

- | | |
|------------------------|-------------------|
| FenderWedge Assortment | 4 x 36 pcs |
| FenderMate Assortment | 4 x 18 pcs |
| FenderMate Fix | 1 x 2 ml & 3 tips |
| FenderPrime Assortment | 2 x 18 pcs |
| FenderPrep Package | 36 pcs |



FENDERWEDGE® Design by Dentists™



FenderWedge, for protection and separation during preparation



Protects & separates

FENDERMATE® Design by Dentists™



FenderMate, sectional matrix for class II restorations



Matrix for class II composite fillings

FENDERMATE Fix® Design by Dentists™

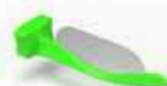


FenderMate Fix, light cure matrix fixation for wide cavities



Light cure matrix fixation

FENDERPRIME® Design by Dentists™



FenderPrime, preparation shield and sectional matrix for primary teeth



Protection and matrix for primary teeth

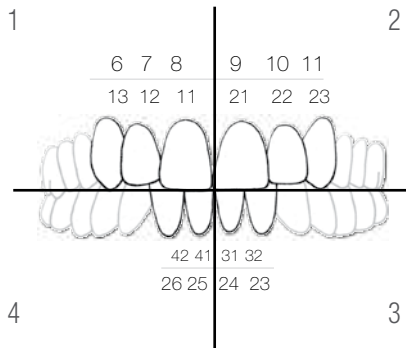
FENDERPREP® Design by Dentists™



FenderPrep, wedge and steel protection for larger preparations such as crowns, veneers and inlays



Protects during larger preparations



For forming corners of composite restorations

- Four sizes of ready-cut mesial and distal corners
- Aids pressure to push material into cavities and etched tubules
- Conforms easily to dentition
- Does not adhere to composite



Choose the right matrix.



Position the matrix.



Apply composite material.



Light cure.

NEW
Luxator[®] LX
Design by Dentists[™]



Luxator LX
Mechanical Periotome





World Acclaimed Luxator Family

In addition to the original designs, that included 8 standard lengths and 5 shorter lengths, we now have 2 double edged instruments and 3 Forte elevators that utilise our much sought after ergonomic handle. Newest to the family are Root Pickers for extracting debris from the extraction socket.

Luxator® is a registered trademark owned by Directa.

Luxator®

Design by Dentists™



N E W

Luxator LX Mechanical Periosteal Elevator

Setting a new standard for trauma free extraction, the new Luxator LX mechanical periosteal elevator offers improved safety, precision and access.

- Optimal access - quicker extractions and minimal tissue damage
- Reciprocating tip in a vertical direction - secure cutting of the fibers in a patient friendly way
- Self directing tip - allows the Periosteal Elevator tip to follow the root surface, reducing the risk of bone damage
- Pre-extraction procedure - will only cut when under pressure, no risk of slipping
- Titanium coated tip - durable tip that will remain sharp

Luxator® is a registered trademark owned by Directa.





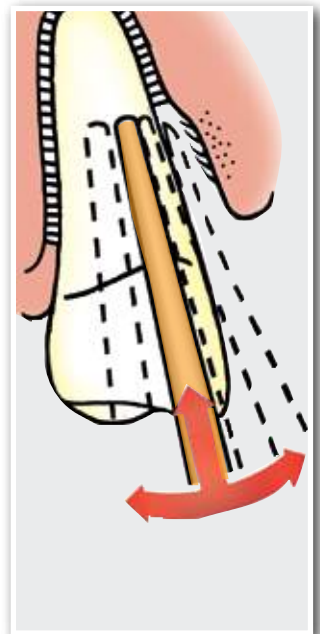
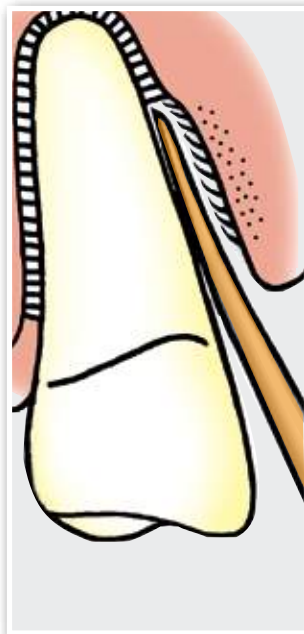
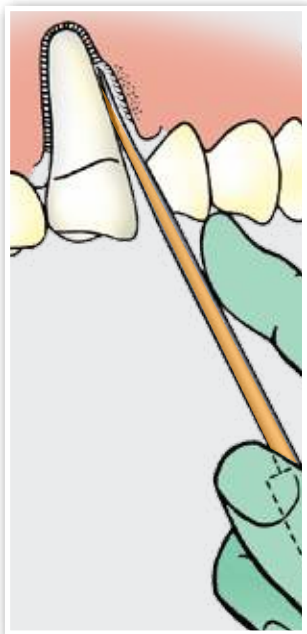
N E W

Luxator Periotomes Titanium

Luxator Periotomes are specially designed periodontal ligament knives with fine tapering blades that compress the alveolar bone, cut the membrane and gently ease the tooth from its socket.

The new Luxator Periotome Titanium offers enhanced durability
Extraction is performed with a minimum of tissue damage.
Titanium coating - glides easier into the socket
The new durable titanium coated tip does not require sharpening.

Luxator[®] is a registered trademark owned by Directa.



Preserved bone integrity and dramatically less trauma for you, your patients and their dentition

Luxator Periostomes are the preferred instrument for performing extractions.

These instruments were invented by a Swedish dentist to make extractions as trauma free as possible. He developed subtleties in the design that only a practicing dentist would appreciate. With an acclaimed, ergonomic handle Luxator instruments are discernably different.

Luxator Periostomes are specially designed periodontal ligament knives with fine tapering blades that compress the alveolar bone, cut the membrane and gently ease the tooth from its socket. The whole operation is performed with a minimum of tissue damage.

Luxator[®] is a registered trademark owned by Directa.

Sharpening Tool



**L1S
Periostome**

1 mm
Straight
Standard

**L2S
Periostome**

2 mm
Straight
Standard

**S2S
Periostome**

2 mm
Straight
Short

**L3C
Periostome**

3 mm
Curved
Standard

**S3C
Periostome**

3 mm
Curved
Short

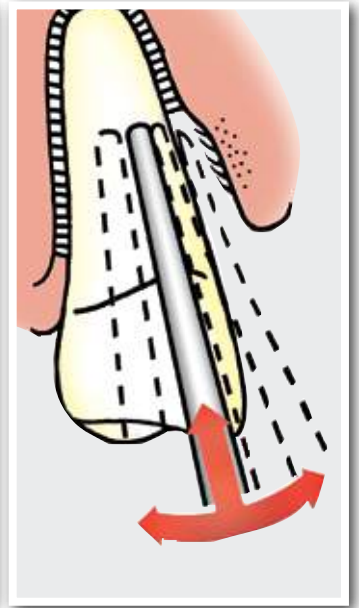
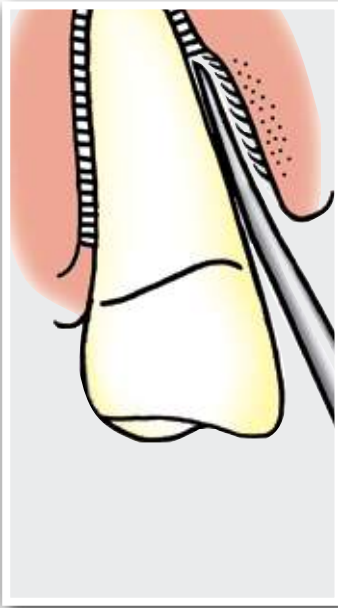
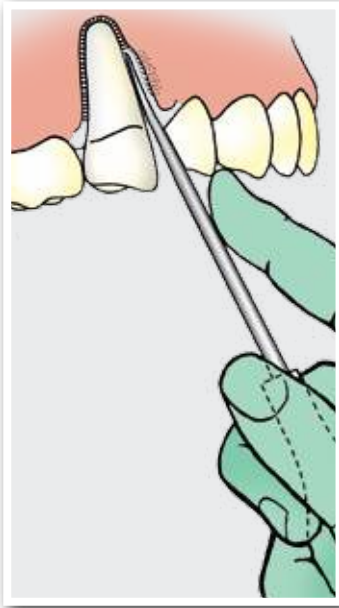
**L3S
Periostome**

3 mm
Straight
Standard

**S3S
Periostome**

3 mm
Straight
Short





L3CA
Periotome
3 mm
Contra
Standard

S3CA
Periotome
3 mm
Contra
Short

L3IC
Periotome
3 mm
Inverted
Standard

L5C
Periotome
5 mm
Curved
Standard

L5S
Periotome
5 mm
Straight
Standard

S5S
Periotome
5 mm
Straight
Short



Fixus 1

Protects and extends the life of Luxator Instruments. Designed to organise and protect Luxator Instruments between treatments. Autoclavable. Safe and hygienic handling. Directa Luxator Extraction Instruments may be ordered ready packed in Fixus 1 container.



FIXUS 1
Design by Dentists™

Fixus 6

Autoclavable container for up to 6 Luxator Extraction Instruments. Clamp secures instruments safely during sterilisation and handling.



FIXUS 6
Design by Dentists™

Luxator Dual Edge Periotome Innovative Dual Purpose Tip

Integrated probing periotome and Luxator. Safer stepped insertion reduces the risk of slipping. Ideal for deeply fractured teeth and decayed roots.

DE3 Dual Edge

3/1.5 mm
Straight
Standard

DE5 Dual Edge

5/3 mm
Straight
Standard



Luxator Forte Elevator Ergonomic & Strong

Incorporates the world acclaimed ergonomic handle and a cornered, rigid tip that enables elevation of roots without risk of damaging the instrument. The unique cornered tip design grasps dentine or root cementum for controlled and safer tooth elevation.

F25 Forte

2.5 mm
Straight
Standard

F32 Forte

3.25 mm
Straight
Standard

F40 Forte

4 mm
Straight
Standard



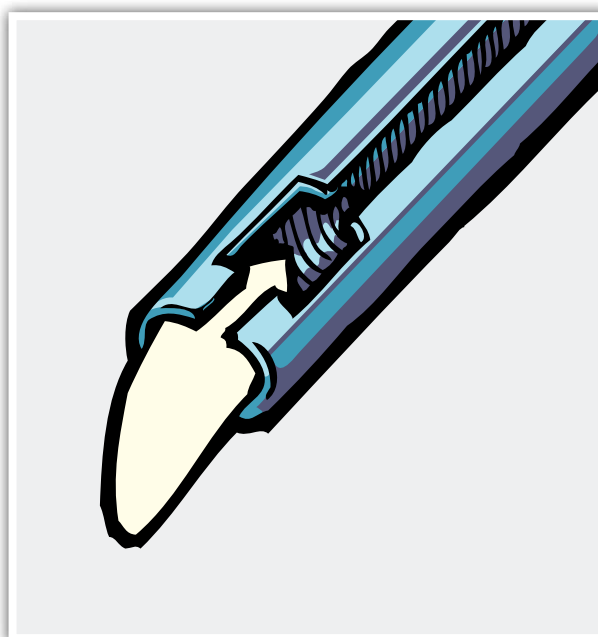
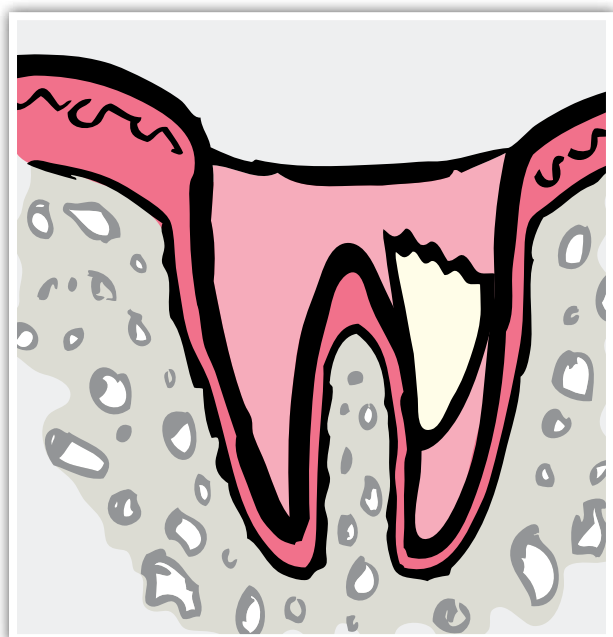


Luxator RootPicker removes debris after extractions

During extractions annoying tooth fragments or loose root tips remain attached to the periodontal ligament. These pieces are very small and slippery, making it difficult to grip them with ordinary tweezers or forceps. Root Picker instruments address these problems with the necessary properties to complete the extraction successfully.

Luxator Root Picker is a short and rigid instrument that makes it easy to insert into the alveolus. The cleverly designed tip provides a sure grip on the debris. Luxator Root Picker is available with a straight or angled tip.

Luxator® is a registered trademark owned by Directa.



PROPHY PASTE CCS

Design by Dentists™



Prophy paste with a difference

Directa's varying grits of prophy paste are second to none in performance, handling and dispensing. Stains and thick layers of plaque are easily removed leaving a smooth and fresh sensation. The unique non-splattering formula contains flouride. Available in four grits offering quick and efficient cleaning every time. Packed in easy to dispense, colour-coded tubes with a long shelf life. Mild mint taste for a fresh feeling.



RDA 250 *
125 micron,
60ml/96g

Blue coarse. RDA 250 equals 125 micron. Contents 60ml or 96g. For very roughly discoloured surfaces and thick layer of plaque.

RDA 170 *
70 micron
60ml/97g

Green medium. RDA 170 equals 70 micron. Contents 60ml or 97g. For thickly layered plaque and discoloured surfaces.

RDA 120 *
20 micron
60ml/84g

Red fine. RDA 120 equals 20 micron. Contents 60ml or 84g. For smaller amount of plaque, and slight discoloured teeth.

RDA 40 *
2 micron,
60ml/84g

Yellow extra fine. RDA 40 equals 2 micron. Contents 60ml or 84g. For polishing of teeth, root surfaces and fillings. Gives a smooth surface.

FACTS AND FIGURES

Supplied in colour-coded tubes this paste is available in 4 grits ranging from very coarse, to tackle the most stubborn stains and plaque, to extremely fine for a high lustre finish. Fluoride is released during use.

* RDA is a light reflective measure of the abrasive effect on dentine. Contains 0,1% Fluoride.

FIXYDAP™
Design by Dentists™

A practical alternative to fiddly small containers.

Clips to the side of a tray or sticks to a surface, even a glove.



PRACTIPAL[®]
Design by Dentists[™]



Do not compromise on predictable cleaning. PractiPal.

The belief that sterile is “clean and safe” is a common misconception. Residue can still remain on Instruments even after cleaning. This “sterile” residue can cause severe inflammatory reactions. Predictable cleaning is essential for 100% control.

PractiPal trays, with minimised frame, incorporate an ingenious means of securing instruments loosely, to ensure maximum water penetration for optimum washing, ultrasonic cleaning or simply rinsing. Maximises cleaning, maximises confidence.

Optimum cleaning, easy storage and safe handling makes PractiPal the product of choice.

PractiPal includes secure bur, file and accessory holders that securely clip into the tray but are easy to remove.

The wide range of colours and types of accessories make it easy for you to design and differentiate “Set-ups” for surgery, dentist and individual operators. Once a cassette is “Set-up” it can be recycled time and time again. Simple, practical and helpful.



Suitable and practical: what are the ideals of a tray system?

Infection control is a major challenge to healthcare practice. An area of high vulnerability is instrument reprocessing so a good tray system that enforces a strict routine is essential. The success of cleaning, disinfection and sterilization is significantly dependent upon the design of the tray being used.

The equipment and procedures used in the clinic will largely determine the success of decontamination.

Easier handling of instruments

A tray system should facilitate the efficient handling of instruments throughout the complete reprocessing/cleaning cycle. An effective tray system with pre-prepared instrument sets for each different treatment prevents the risk of confusing clean and used instruments, saves time and improves your clinic's efficiency.

Light & non-metallic

Trays should be made of a light, non-metallic material. This avoids electrolytic corrosion resulting from dissimilar metals. It also reduces heat energy loss and noise from metallic trays. The heavier the load, including the tray, the longer the time for disinfection and sterilisation.

Secured but free

Instruments should be securely held within the tray but free to move for thorough cleaning. Trays that firmly hold instruments and/or have insufficient water penetration can leave microbiological residue on

your instruments. An area of contact will not be properly cleaned and disinfected.

Instrument logistics

Very important and often overlooked, are the logistics of instrument handling. A common mistake is overloading. The more congested the routines, the more difficult it is to keep track of instruments. Regular review is recommended to ensure that cleaning efficiency, storage capacity and sterility are optimized. PractiPal makes it easier for you to be organized and maintain your standards.

Thorough cleaning is essential

An item heavily loaded with microbiological material will be more difficult to sterilize than one lightly contaminated. The most effective stage of any decontamination procedure is thorough cleaning and this should accompany or precede all disinfection procedures.

PractiPal your Practice Friend, meets that specification. An ideal system to optimise your infection control process.



The pleasure and efficiency of PractiPal in your practice.

Quiet, light weight and colourful. A pleasure to work with! Fiberglass-reinforced PractiPal is made of highly durable plastic that does not absorb heat in steam autoclaves and washer disinfectors aiding the cleaning process and saving energy costs.

PractiPal Tray System includes trays with bur stands, file stands, consumables and accessories that can easily be secured onto the trays throughout the whole cleaning and disinfection process.

Extremely quiet

Our fiberglass-reinforced durable plastic simply does not clang and bang like metal.

Safe for you and your staff

Instruments securely held in PractiPal help avoiding accidents, at the same time as simplifying the inspection of instruments. Single use materials and hazardous waste can be easily removed and thrown into the waste bin.

Improves practice efficiency

PractiPal tray system includes bur stands, file stands, consumables and accessories that can easily be secured into the trays. They are held securely throughout the whole cleaning and disinfection process. Both tray clamp and bur stand/file holder are easy to open.

Once prepared a tray "Set-Up" is cycled over and over again. After treatment PractiPal allows the disposal of waste but holds instruments and burs in place for cleaning and sterilisation.

Minimises the number of instruments in the treatment area

Your pre-prepared tray contains only what you need for the procedure.

Minimises the number of instruments in your practice

Experience has shown that most dental practices have lots of superfluous instruments. Savings as high as 20% have been reported by dentists who have adopted the system and put into use all of the instruments in the practice.

Organises your practice

Bur and accessory holders are so easily misplaced. Our simple solution is to secure the instruments, burs and accessories in Pre-prepared trays for use over and over again. After treatment the used but complete tray is replaced with a new "Set-Up" for the next patient.

The Basic Trays



Full Tray - 18 instruments
(280x180x37 mm)

Colour Coded Clamps, File & Bur Holders

Instrument Clamp

Secures instruments for optimal cleaning without damage.



Bur/File Stand

Minimizes sharps injuries. The same stand holds either 28 files or 16 burs.



Compact Bur/File Stand

Minimizes sharps injuries. Two different models for burs or endo. The file stand holds 13 endodontic instruments, the bur stand holds 7 RA (2 RAL) and 8 FG burs.





Half Tray - 9 instruments
(140x180x37 mm)



Mini Tray - 5 instruments
(80x182x37 mm)

Colour Coded MultiBlock & its Disposables

MultiBlock disposable holder

Available in nine colours.



MultiPoint

For GP, PP and liquids.



MultiDappen

With 5 mini-cups for bonds, primers and medicaments.



Waste Cup

With instrument scraper.



Endodontic Foams

Large: 50x32x23 mm
Small: 30x15x13 mm



Light Shield

For the MultiDappens to protect light-curing materials.



Set-up Proposals



**Complete Set
Preparation and Restoration Full Tray**

Bur stand for 16 burs
MultiBlock & Disposables
Instrument Clamp
Holds 9 instruments



**Complete Set
Endodontic Full Tray**

File stand for 28 files
MultiBlock & Disposables
Instrument Clamp
Holds 9 instruments



**Compact Bur Set
Preparation and Restoration Half Tray**

Compact Bur Holder for 2 long burs, 5 HP/Ra and 8 FG burs
Instrument Clamp & Waste Cups
Holds 9 instruments



**Compact File Set
Endodontic Half Tray**

Compact File Stand for 13 files
Instrument Clamps & Waste Cups
Holds 5 instruments





**Mini
Tray**

Mini Tray for 5 instruments
Mini Instrument Clamp



**Compact File Set, Compact Bur Holder
Emergency Half Tray**

Compact File Stand for 13 files
Compact Bur Stand for 2 long burs, 5 HP/Ra and 8 FG burs
Holds 5 instruments



**Tray, Compact Bur Holders
Spare Instruments Half Tray**

Holds 6 small bur/file stands



**Tray, Instrument Clamp
Hygienist Half Tray**

Holds 9 instruments



Step by Step
**The indisputable
efficiency of PractiPal**



1 Select your colour coded treatment cassette.



2 Everything is convenient for the procedure thanks to PractiPal.



3 After treatment, resecure the instruments and shake out disposables.



4 Rinse and inspect tray and contents. Instruments are safely secured to avoid sharps injuries.



5 Wash and disinfect the tray complete with its instruments and accessories.



6 Replace the tray in storage, ready for the next patient.



Plac-o-Tect UV Disclosing Pellets

- Simply the best technique for oral hygiene demonstration. Colored plaque only visible when exposed to Directa's low-dosage UV light.
- Simple application – tweezers and a pellet – rub on - rinse. Only visible when wanted using a mirror and lamp
- Patients clearly see the result after tooth cleaning. Invisible when the patient leaves the practice.



Use tweezers to rub on the fluorescent agent with the pre-impregnated pellet. Rinse.



Colored plaque will be visible when exposed to Directa's UV light.



Remove plaque and clean as usual.

Tooth Brushing Demonstrator Model and Brush

- Large scale toothbrush and dentition make aid clear instruction of oral hygiene techniques
- The model is a hinged mandible and maxilla



Interdental Brush

- For efficient approximal cleaning in areas that are difficult to clean by other means
- Rounded and smooth tip avoids tissue damage
- Protective sleeve for brush or to prolong handle for a better grip
- Available in six sizes





- Available translucent and opaque
- Molars available
- Easy to handle
- Easy to dispense from the Directa mould guide
- A selection of sizes for each quadrant

Directa - Temporary Crowns

Our acclaimed Coding System has been adopted by manufacturers the world over. Our crowns are made from Polycarbonate which is resilient to mouth fluids and not brittle so it can be trimmed without risk of damage.

The unique Directa Selecta mould guide makes even tiny crowns easy to handle, select and dispense. Simply select the right size and mould quickly and easily. The Selecta is then refilled from the organiser box ready for next time.

Emptying the compartment alerts you to reorder.

Directa® Temporary Crowns is a registered trademark owned by Directa AB



Translucent



Opaque



Rondell 2 tone disclosing pellets

New plaque, younger than 3 days, is coloured red. Older, more dangerous plaque is coloured blue

- More convenient, cleaner way to apply disclosing solution
- Simply paint the tooth surface with pre-soaked pellets and plaque appears
- Easy to brush off
- Mild taste of peppermint



Tray Cleaner

- A trouble free way to remove stubborn debris from impression trays
- Useful in the dental practice as well as laboratory
- Usage: 80 g per 1 litre of water



Maintains grip even when wet

- Disposable adhesive tipped applicators that securely hold small objects
- Can be used throughout the treatment
- Adhesive tip safely holds inlays, onlays, veneers, bands, brackets and tooth jewellery
- Bends easily for access
- Bent tip stays in position
- Specially designed dispenser for easy handling and to protect adhesive tip.

Stik-N-Place® is a trademark owned by DIRECTA AB



Roto Stand

- Simplifies handling and organisation of burs
- The pivoted bur platform rotates to facilitate quick and easy selection of burs
- Available for FG, HP/RA (Latch) and a special version combining both
- Can be cold sterilized
- Close fitting lid to protect burs from dust and contamination
- Simplifies handling and organisation of burs
- The pivoted bur platform rotates to facilitate quick and easy selection of burs
- Available for FG, HP/RA (Latch) and a special version combining both
- Can be cold sterilized
- Close fitting lid to protect burs from dust and contamination
- Holds 60 pcs FG burs, 72 pcs HP/RA burs or 18 pcs FG and 44 pcs HP/RA burs

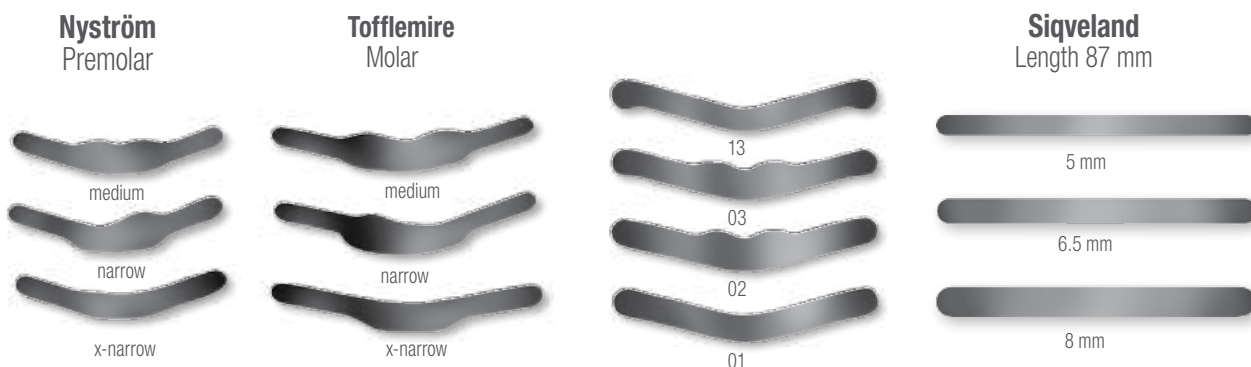
ROTOSTAND™
Design by Dentists™



Thin King

- Super thin 0,02 mm stainless steel
- Easy placement and burnishing
- Optimal contact after preparation

THINKING®
Design by Dentists™



ThinKing® is a registered trademark owned by Directa AB

FACIFORM™
Design by Dentists™



Pre-formed Transparent Matrices

For Forming Composite
Facings

FULLFORM™
Design by Dentists™



Transparent Peel Off Crown Forms

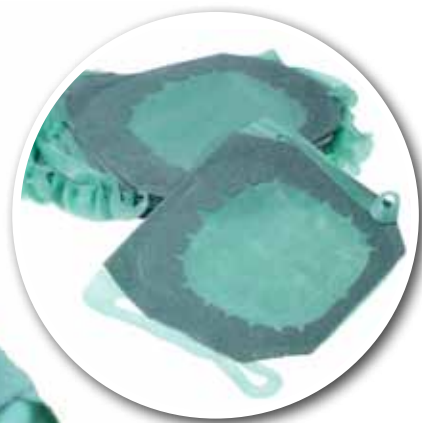
- Made of strong laminated plastic
- Less brittle, resistant to hydraulic forces
- Coded like and fully interchangeable with most popular brands, F, OP and C system

DIRECTASTRIPS™
Design by Dentists™



Dispenses one strip at a time, even with gloves.

- Super thin and strong plastic, only 0,05 mm
- High tensile strength and flexibility
- The matrix can be drawn tightly and snugly around the tooth
- Excellent marginal adaption



DRYDAM™
Design by Dentists™

Comfortable absorbent rubber dam

- Avoid fiddling with Rubber Dam
- Increased patient comfort
- Ready to use
- Available in Medium and Thin
- Dry Dam fits like a face mask with an absorbent lining to give patient comfort and reduced risk of allergic reaction.
- Material: latex.

New improved Rubber Dam Frame

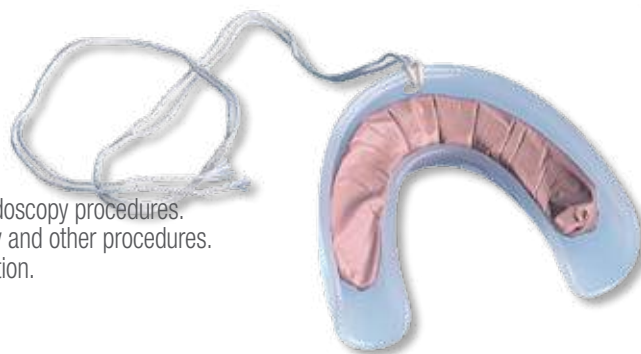
- Time proven design
- Improved grip of rubber dam
- Autoclavable



CAMO®
Design by Dentists™

Tooth Protector

- Disposable splint for maxillary protection of dentition during GA sessions or endoscopy procedures.
- Useful in general medicine during endoscopy, intubation, electro shock therapy and other procedures.
- Heat sensitive soft silicone in a non-rigid plastic tray. Moulds to patients dentition.
- Avoid accidental tooth fractures.



Camo® is a registered trademark owned by Directa® AB

Plastic Pins

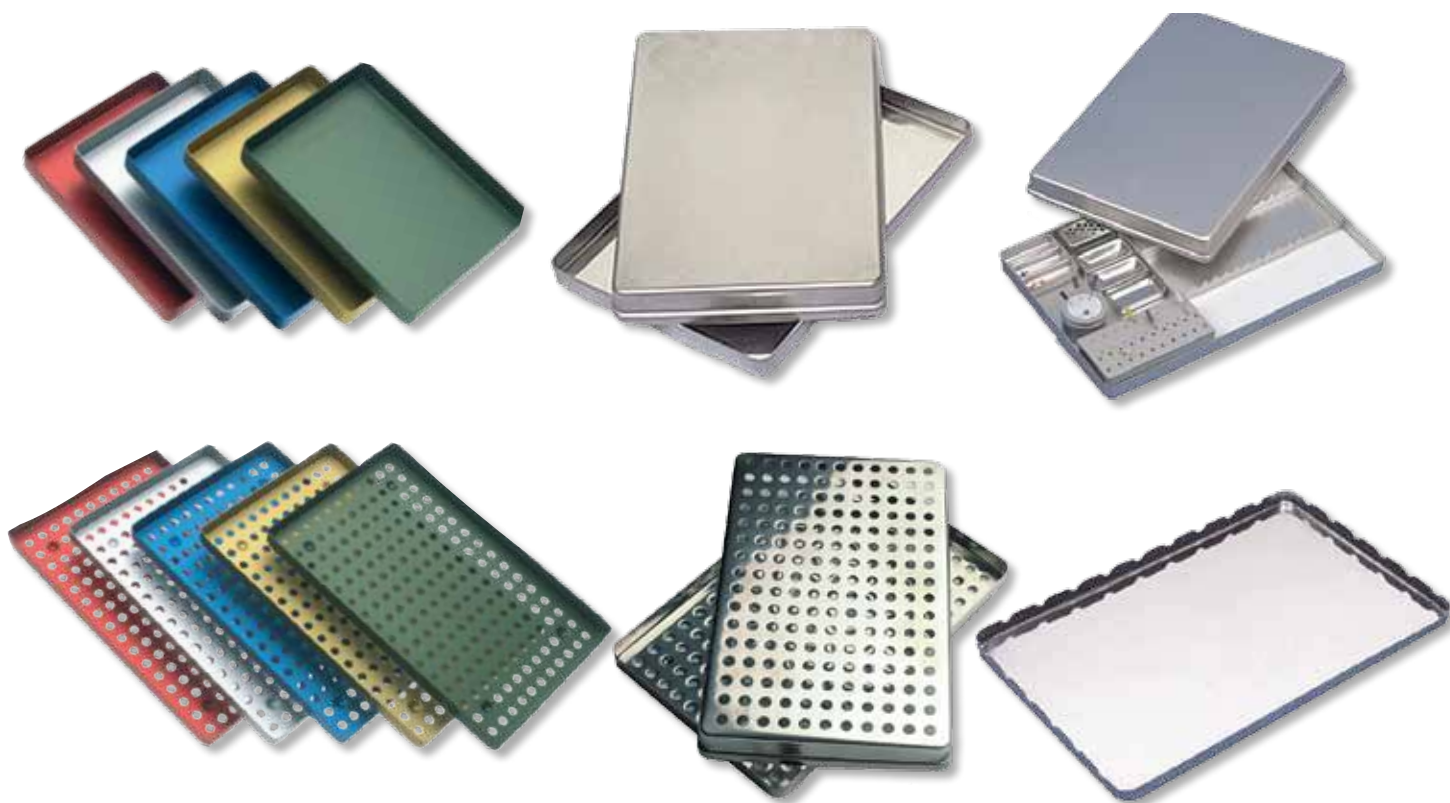
- Quick and economical impression and burn out posts for cast posts and cores
- Clean burn out plastic that avoids porosity in the casting
- Designed to key into the impression.

BURNOUT POST™
Design by Dentists™



Tray System

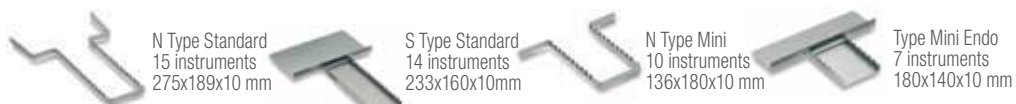
Aluminium and stainless steel trays.
Plain and perforated.
Large size perforations to improve steam & water penetration.



Accessories

ANODISED ALUMINIUM

Tray Insert



N Type Standard
15 instruments
275x189x10 mm

S Type Standard
14 instruments
233x160x10mm

N Type Mini
10 instruments
136x180x10 mm

Type Mini Endo
7 instruments
180x140x10 mm

Box and Stand



Bur Stand
24 HP/RA & 24 FG Burs
78x40x7mm

Reamer Stand
105x50x24 mm

Modul Box
90x45x12 mm

Box for points
50x50x12 mm

Bur Stand Mini
12 HP/RA & 12 FG Burs

Reamer Stand Mini
52x50x24 mm

Clean-Grip
Ø 40, height 30 mm

Foam Insert for
Clean-Grip

STAINLESS STEEL

Tray Insert



N Type Standard
11 instruments
275x189x10 mm

Box and Stand



Bur Box
48x27x9 mm



Medicament Cup
50x24x10 mm



Pellet Container
50x27x10 mm



File Holder with disposable sponge
For holding and cleaning files
50x50x25 mm



Sponges for File Holder

Design By Dentists™

Our products are developed, tested and evaluated by our elected team of highly-qualified and renowned Swedish and international dentists with the aim of making life easier for the dentist in his or her daily clinical work. Hence, we have adopted the tagline "Design by Dentists" to illustrate our objective.

DIRECTA
directadental.com



DIRECTA AB
P.O. Box 723,
194 27 Upplands Väsby, SWEDEN
info@directadental.com
Phone +46 8 506 505 75

